

MrMason®

Substrate and Surface Protection for Construction



Mr. Mason

New age Construction technology has created a demand for the use of functional chemical solution in niche construction; to ensure safe, long lasting, resilient and high-performance construction quality.

In Parallel, modern architectural design and concepts for commercial and residential spaces have meant a rise in demand for products that provide fool-proof protection along with an aesthetic appeal.

Since 2015, RPPL has engaged itself into the development, demonstration and application of high-performing construction chemicals to fulfill the ever-growing needs of the Construction Industry.

With their home-grown brand - Mr. Mason - RPPL welcomes you to explore a wide range of solution curated for construction protection, focused durability and sustainability.



Substrate and Surface Protection Systems-

In the realm of construction, substrate protection is paramount. Mr. Mason's portfolio of construction chemical stands as a formidable guardian for your structures.

Engineered with precision, Mr. Mason's substrate protection solution form an impermeable shield, safeguarding against the relentless forces of nature and man-made wear.

Whether it is corrosion inhibitors fortifying metal structures or advanced coatings preserving surface from weathering, our construction chemicals are your first line of defense. Trust in our commitment to longevity and reliability, ensuring that your substrates endure the test of time, unfazed by environmental challenges.



Terrace Waterproofing Solutions-

Step into a domain of unparalleled waterrotection with Mr. Mason's comprehensive line of complete chemical waterproofing solutions.

Protect your projects in a sheild of cutting-edge technology and unwavering reliability.

Our portfolio is meticulously crafted to offer a holistic approach, addressing every facet of waterproofing challenges.

From advanced sealants that create an impenetrable barrier to innovative membranes engineered for superior water resistance, our complete chemical waterproofing solution redefine durability.

Experience the confidence that comes with a steadfast defense against water intrusion, ensuring not just protection but peace of mind for your structures.

A.) Total Waterproofing Solution (for new construction)

Mr. Mason's Total Waterproofing Solution is engineered for new construction where a total water-proofe barrier can be created from scratch.

This multi-layered coating system form a network of hybrid-polymers and a functional top coat system to provide water impermeability and excellent weatherability.

The layer of the system and its mechanism are defined below.

Contact RPPL -sales for individual product TDS.

Surface Requirement - Base Brick-Bat Coba with slpoe maintained as per requirement.

Surface Preparation - Cleaning, Grinding and Scarification

Layer 1 - Acrylic Polymer Primer

Layer 2 - Laying of Non-woven fibre - 50 GSM

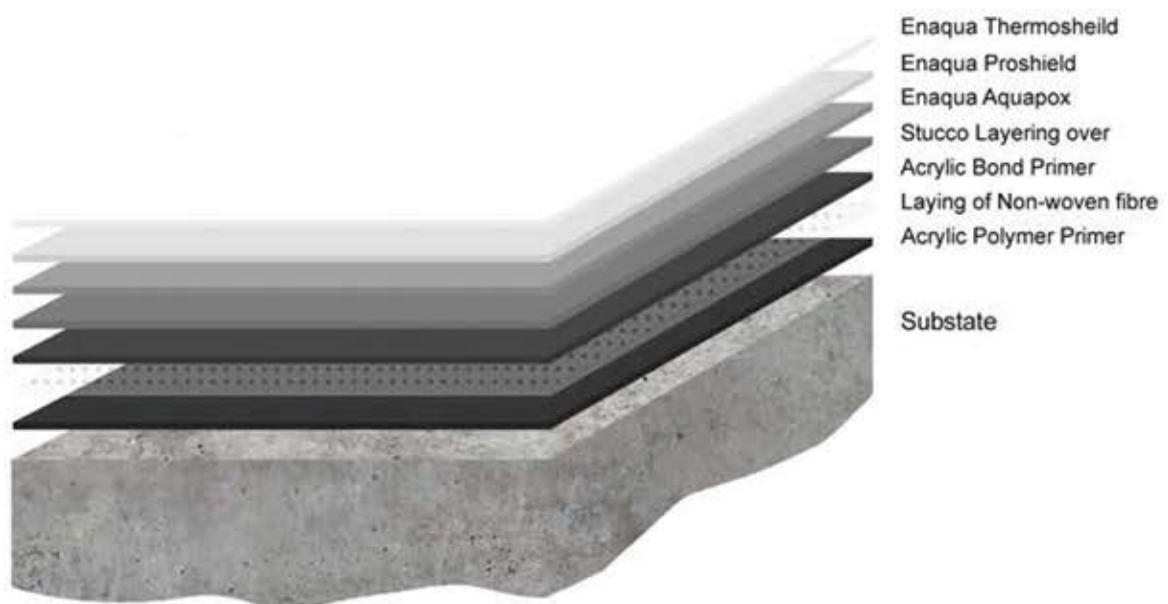
Layer 3 - Acrylic Bond Primer

Layer 4 - Stucco Layering over Fibre

Layer 5 - Enaqua Aquapox - Flexible 2K Epoxy Membrane

Layer 6 - Enaqua Proshield - Anti Microbial, UV stable 2K PU coating system

Layer 7 (optional) - Enaqua Thermosheild - 1K Heat Reflective Paint with a high SPI value, for green Building Certification



Terrace Waterproofing Solutions-

B.) Water Sealing / Repair Waterproofing for Old Construction

Mr. Mason has fine tuned its base primer to provide a fool-proof water tight membrane on old/damaged terrace structures, This ensures an effective membrane to prevent further damage and provide excellent weatherability.

The layers of the system and its mechanism are defined below.
Contact RPPL -sales for individual product TDS.

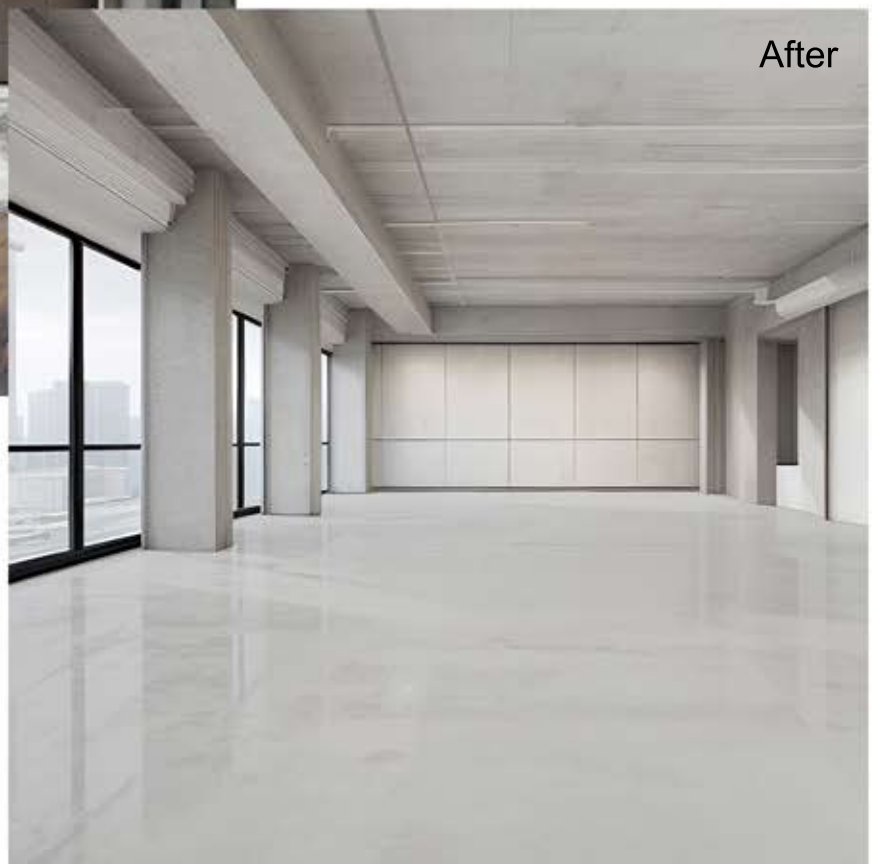
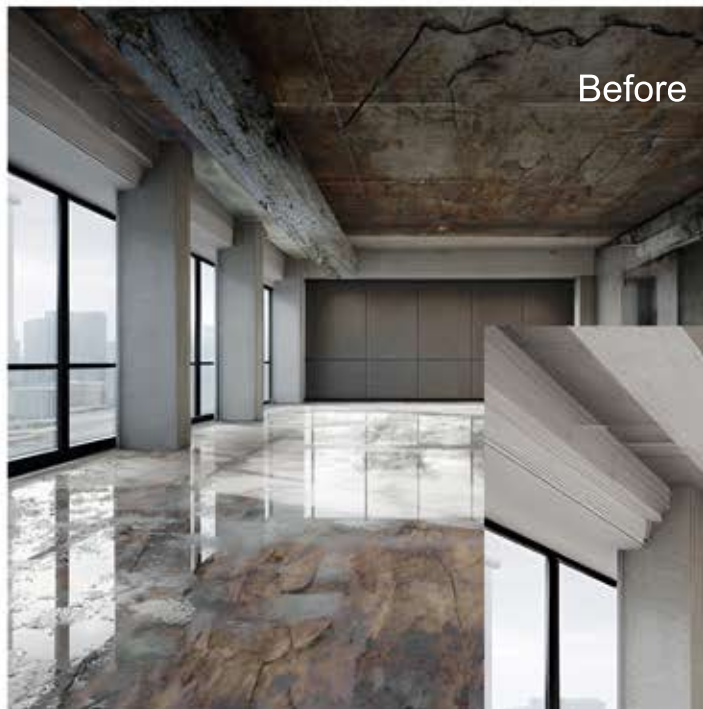
Surface Preparation - Cleaning and grinding, scarification if required.

Groove Repairs - Opening up of damaged grooves and repairing them with polymer mortars.

Base Primer - 1 or 2 coats of Epocoat Aquaseal Epoxy based Primer.

Top Coat - 2 coats of Enaqua Proshield - Anti Microbial, UV stable 2K PU coating system

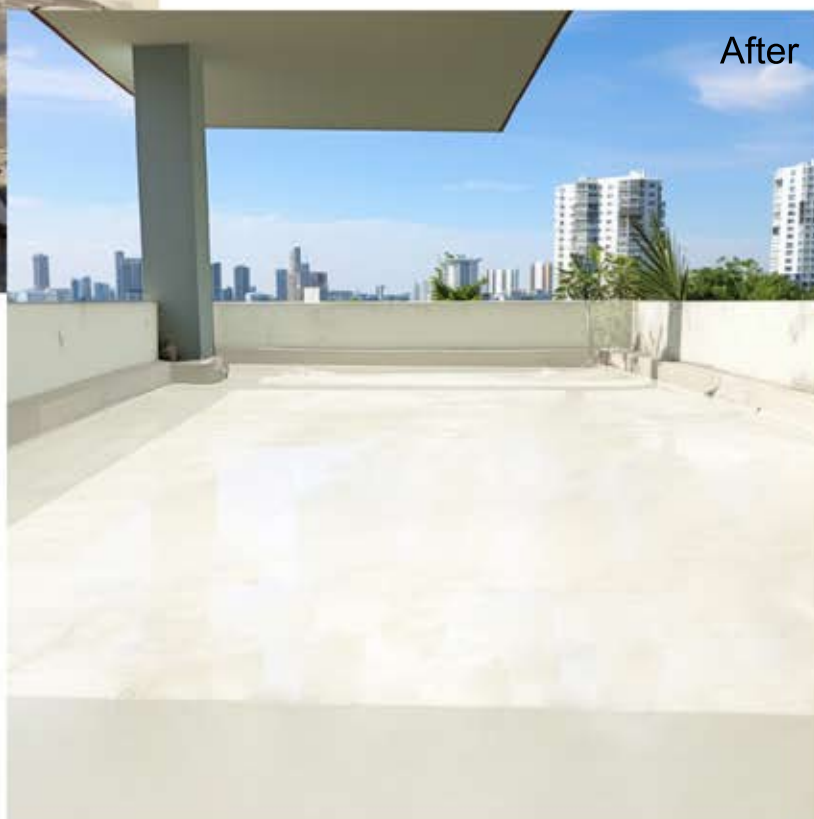
Optional Top Coat of Enaqua Thermoshield - 1K High SRI Paint.



Before



After



For any further details, please contact us at -

Rand Polyproducts Pvt. Ltd.,
Gat No. 3a/2, Old Gat No. 1649,
Village Ghotawade Village, Tal. Mulshi,
Dist. Pune, PIN - 412 115.

Contact:
Sales/Admin 020-6790 8609/10
Technical 020-6790 8621

Email:
rand@randpoly.in